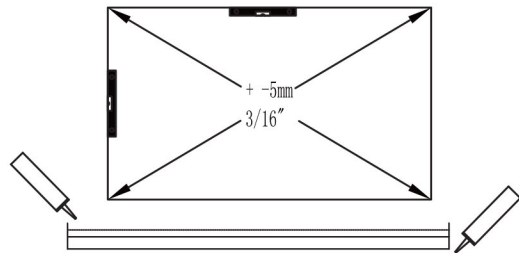
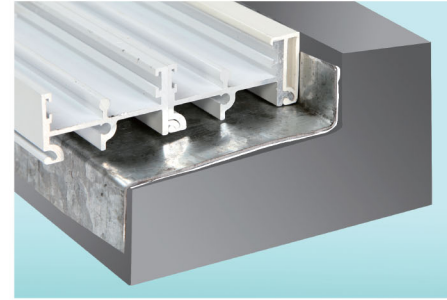
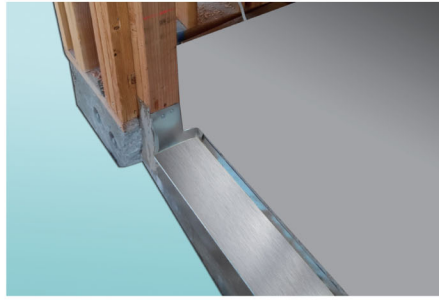
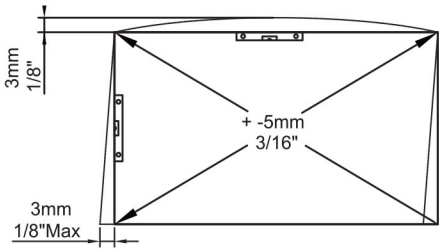


Frame Installation instruction



Center of frame should be 3/16" higher than jamb sides sag.

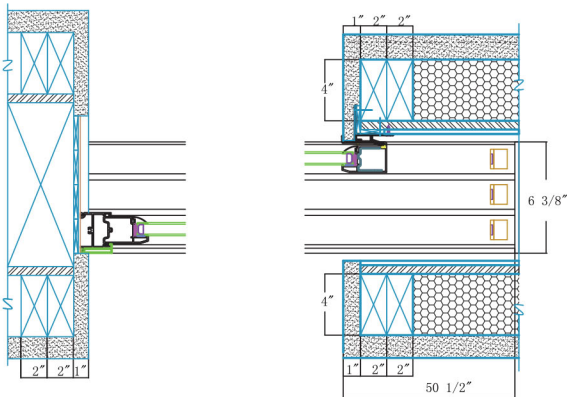
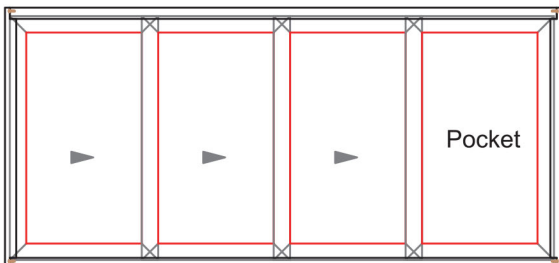
ADA and Flush sill options

The Threshold in the installation to meet ADA requirement will be flush with the finished floor, and still have weather resistance to withstand air and water intrusion.

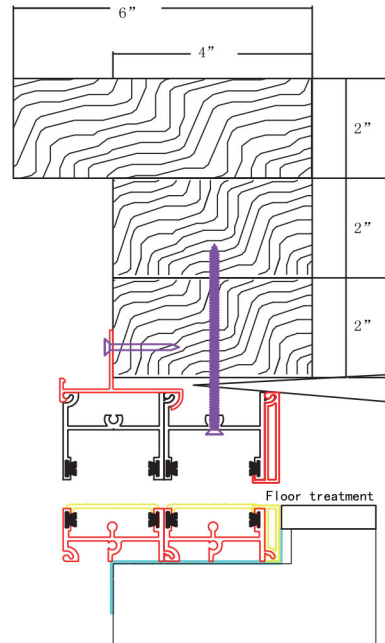
Panning system recommended by Manufacturer in accordance with AAMA Installation Guide Lines. Sealing pan to substrate / threshold to pan should always be in accordance with AAMA Installation Guide Lines.



Install Frame



Example of New Construction with Nail Fin



NOTE:

When penetrating the sill pan flashing with fasteners, pre-drill the holes, apply sealant into cleaned out hole. attach the fastener then seal over fastener heads with appropriate sealant. (Fasteners not supplied for header or sill).

